

Hub of activity a step away

There's no need for a car living in the heart of the action, writes **Nathan Mawby**

APARTMENT living promises a lockup-and-leave lifestyle where you can ditch the car. But few developments could match Hub for its prime position in the centre of the action.

The complex, to be developed by Edenhem Property Group, is set to feature 31 apartments and retail spaces over seven levels as it replaces Broadbent Garden Supplies in the midst of the bustling shopping and transport hub on Centre Rd, Bentleigh.

At seven-storeys tall, it will also be tied into the surrounding area like nothing before it, according to Castran Gilbert director David Howard.

From the upper levels, apartments will connect with a vista including the bay and Melbourne's city skyline.

"You could live there and not need a car to do anything: supermarkets, shops, cafes — the whole lot is just there," he said.

The building also promises to be a visual centre, with Max Architects designing an aesthetic combination of bold lines and right angles across a facade of glass and textured concrete.

Inside, the design will have an understated modern industrial edge, with scope for buyers to make more or less of this as desired.

Brick walls painted white will

support industrial chic concrete ceilings above oak floorboards, with the option to plaster over the ceiling for a more traditional look.

Dark-grey joinery and fittings, including an island bench in the kitchen, will provide contrast, as will black granite benchtops.

A combination of glossy black subway tiles and concrete-look tiles will feature in the bathrooms.

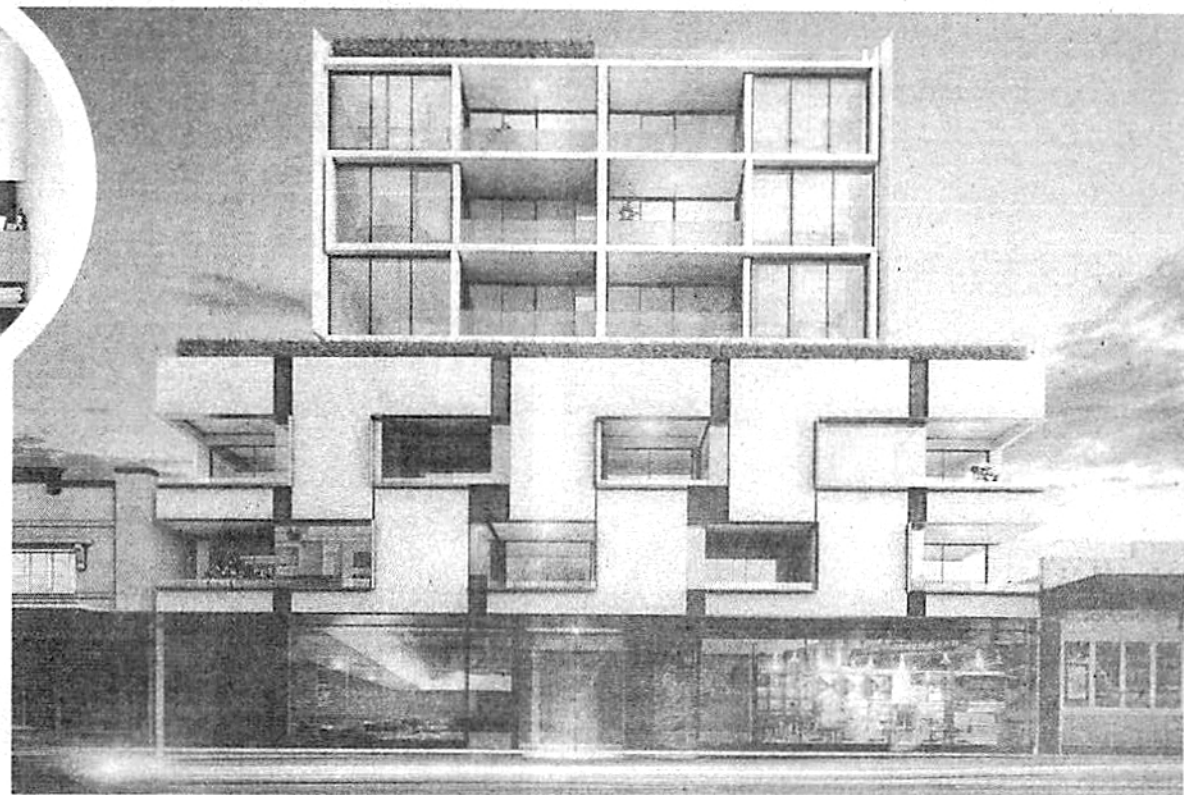
A European laundry can also be upgraded to be concealed behind a sliding barn-style door for those seeking more industrial chic.

The apartments have interested buyers including downsizers and young professionals, Mr Howard said.

Each will come with a balcony or terrace, and at least one basement carpark.

There are six one-bedroom apartments with a study, priced from \$470,000 to \$485,000.

Two-bedroom apartments are priced from \$599,000-\$725,000, with



20 available. And three three-bedroom designs are priced from \$789,000-\$815,000. Plans for a penthouse spread over two levels and a sub-penthouse are being finalised.

For more information, call David Howard on 0407 766 329, visit the display suite at 322 Centre Rd, Bentleigh, open 11am-1pm weekends, or see hubbentleigh.com.au

